



# TRUDOXHILL PARISH PLAN



2024-2034



## Parish Plan Overview

---

The Trudoxhill Parish Plan 2015 – 2025 is coming to the end of its intended life. That Plan was prepared to ensure that decisions, for example on new homes, the environment, the provision of facilities and traffic that affect us all in local life, are the right ones which will be supported by the community. Although there is a limit to what the Parish Council is able to influence, it can nevertheless concentrate our efforts on the things that you have told us actually matter to you. This revised Plan will put the Parish Council in a stronger position to work with Somerset Council, the police and other authorities when seeking improved services or funding or making representations on planning matters.

The Parish Council therefore reviewed the Plan, through a Community Review Survey conducted in 2023, to gain the views of all residents of Trudoxhill, both in the village and the wider parish. The 2021 national census data stated that 439 people live in the Parish and, as 125 surveys were completed, it is clear that the results represent a high proportion of all households and provides a substantial foundation on which to base the intended actions.

The majority of respondents, 70%, live in Trudoxhill village and 30% in the wider Trudoxhill area.

Nearly 43% have lived here for over 20 years. Our population is generally older with more than three quarters of respondents over 45 years old and 36% being senior citizens.

We live in a beautiful area and this is acknowledged by the overwhelming majority of respondents who appreciate the open countryside, quiet environment, clean air and dark skies in which we live. The proximity to Frome and the supermarkets was also acknowledged favourably.

A substantial majority of respondents favoured allowing expanded or new small studio or workshop spaces or stables within the Parish. Large scale housing development or development outside the traditional boundary of the Village, would not be supported

The full results of the survey are available to view on the Trudoxhill Parish website ([trudoxhill.org.uk](http://trudoxhill.org.uk)) and this document, the Parish Plan 2024 – 2034, identifies and highlights the main results. It sets out the basis for decision-making by the Parish Council over the coming years, the action to be taken and, in some cases, the action which has already been taken, as a result of the representations made in the survey.



## A Brief History of Trudoxhill

---

### Ancient Times

The earliest inhabitants were Celtic Ancient Britons from northern Europe who lived on Postlebury Hill. In Saxon Times King Cenwahl of Wessex (who died in 672) gave land to his kinsmen. Wita had Witham, Nunna had Nunney and a hilly area was granted to Truttoc. Thus the origin of Trudoxhill.

### Medieval Times

Trudoxhill was within the huge forest of Selwood which in 1154 became King Henry 1's exclusive royal hunting ground. Not a forest as we think of today but a tract of woodland, scrub, marsh and grassland. Outside the Royal Forest tenants shared open, arable fields and, along the Ridgeway, the land would have been used for sheep grazing. In 1348 the Black Death caused the village to be temporarily abandoned.

In 1699 the Congregational Chapel, perhaps the second oldest in the country – only Horningsham's being earlier - was built.

In the 18th and 19th centuries the Enclosure Acts enabled land in the Royal Forest to be sold to larger farms, dispossessing the serfs who had used the forest for timber and grazing.

### 19th Century

Rapid population growth in towns following industrialisation required improved land for more food and livestock production. Trudoxhill was now a thriving community with agriculture the mainstay of its economy and many shops including groceries and bakers and two pubs. Most of the residents' daily needs could be found in the village.

### The Village Hall

This was a former military dentist's hut bought for £48 and moved piece by piece from Blandford Forum to Trudoxhill. Dismantled, transported and reassembled by villagers, it opened in 1974.

### Today

Trudoxhill is a residential village with farming still the mainstay but now with a number of small and micro businesses and many residents managing their own businesses and working from home.





## Employment

---

Approximately 40% of respondents are in full time employment and 20% part time, 8% are studying and 34% are retired.

### Working from Home

30% of respondents work only from home in the Parish while a similar percentage work some days from home and some days away from Trudoxhill. 24% work away from Trudoxhill and 16% work in businesses within the Parish. A common employment is, not surprisingly, micro businesses. These statistics appear to represent a national trend of increased home working since Covid lockdowns and the development of more businesses run by home-working individuals. It could show a greater need for services and facilities in the Parish including access to broadband services which was a major concern.

### Commuting

Not surprisingly over three quarters of those who work away from the Parish travel to work by car. Only 1 from all of the respondents uses Somerset Council's community transport (Slinky Line). 4 use a train or plane (but presumably travel by car to a station or airport) 1 uses a taxi. A very small number used bicycles to commute.

### Business Premises

Should a need arise for more business premises in the Parish, although only one employer predicted that he would require expanded space in the near future, a substantial majority of respondents would support expanded or new small studio or workshop spaces and stables. A smaller majority would support new hospitality or light industrial and commercial premises. A significant minority raised concerns about location and increased traffic and suggested that Frome would be a better location for commerce.

### The Built Environment

Survey respondents were almost unanimously willing to support minor residential development such as house extensions or improvements but support was split when asked about infilling empty spaces through the village. Large scale housing developments or building outside the village boundary, in what is generally known as the 'Development Envelope', did not find majority support.

### Wind Turbines

It is likely that during this Plan period the Parish Council will receive a planning application or applications for wind turbines. Assuming that they would be appropriately sized to fit comfortably within their landscape setting, 80 respondents expressed support for them whilst 25 said they would not support them.

### Parish Council Action

1. To take heed of local opinion when commenting on planning applications.
2. To support suitable planning applications for small to medium work spaces in suitable locations.
3. To keep working with providers to pursue better internet access.
4. To support planning applications for suitably sized wind turbines in suitable locations.



## Transport and Traffic

Traffic issues, particularly speeding vehicles and the volume of traffic including heavy vehicles and farm machinery, raised the most concerns in the survey. Concern was also raised about the lack of safe footpaths in the village and particularly that there is no traffic free route to Nunney or safe footpaths through the village.

Most people own a car, van or motorcycle with only 4 respondents owning electric vehicles. A small number of respondents said they would use a public electric car charging point if there was one but many more respondents would not. 24 respondents would consider using a car or electric car share scheme. 26 respondents would be prepared to use a community transport scheme to and from Frome or the super-markets if one were available.

### Concerns

By far the greatest concern expressed by 77 respondents was speeding traffic. 29 respondents had issues with HGVs and large farm traffic and 25 about the volume of traffic overall. A number of respondents were concerned about road safety, car parking or parked cars. However, it was recognised that living in a farming area we must accept heavy farm traffic within and through the village and it was also noted that an active farm operates in the village and access is needed through the village to farms elsewhere. One respondent replied, “The nature of our roads are that they are a consequence of deliveries historically made on horse and cart. They weren’t designed for parking on the side of the road and the size of modern vehicles”. A reasonable volume of traffic must therefore be accepted and managed.

### 20 mph limit

As a result of the survey representations together with a further targeted door to door survey and the ongoing discussions between the Parish Council and Somerset Highways department taking into account the data recorded by the Community Speed Watch team over the last few years, it has been agreed with Somerset County Council that Trudoxhill, along with some of the larger towns in Somerset, will have a 20 mph speed limit through the built up section, crucially at no cost to us.

### Parish Council Action

To oversee the implementation and observance of the 20 mph speed limit.

### Community Speed Watch

The Parish Council will continue to support Community Speed Watch but the team urgently need more volunteers to continue their work of reducing speeding motorists, both in the village and on the Nunney Catch to Gare Hill road, which is regularly used by horse riders, cyclists, joggers and dog walkers, and has a number of accesses to farms and properties including the Belle Vue Equine Clinic.

### Footpaths and Bridleways

A high proportion of residents regularly use our footpaths and bridleways but there are missing links. In particular the road to Nunney Catch is dangerous for horses, cyclists and pedestrians and a safe, traffic free route to Nunney would be welcomed to provide a vital link to shops and school.

### Parish Council Action

To explore the potential for new footpaths including to Nunney.





## Village Facilities

### Business Premises

A substantial majority of respondents would support the development of expanded or new small studio or work spaces and stables. However, a significant minority raised concerns about location and increased traffic, and suggested that Frome would be a better location particularly for large scale commerce. A smaller majority would support new hospitality or light industrial and commercial premises.

### Parish Council Action

Support suitable planning applications for small to medium work spaces for local people in suitable locations.

The poor access to broadband services in our area was a major concern to businesses as well as individuals.

### Parish Council Action

To keep working with providers to pursue better internet access.

### Playing Field

Trudoxhill lacks many of the facilities which would normally be found in a village. A major concern, and one that might be a bar to attracting new young people moving into, or remaining in, Trudoxhill, is that the village is one of the very few in the country which has no open space play area (such as those in Nunney or Witham Friary both of which are very heavily used). 60 respondents considered that they are likely or very likely to use a large recreational area for formal or informal games particularly to meet the needs of the growing numbers of younger families if a suitable site could be found.

The Parish Council has discussed the possibility of acquiring a field with landowners and remains optimistic that a suitable site might be identified. Should a site be found, a substantial sum will be needed to create the final result, such as a football pitch, landscaping, barbecue areas, skate boarding, allotments, wildlife enhancement (e.g. pond) etc.

### Parish Council Action

Continue endeavours to achieve a Village Recreational Area.

Although there is no traditional village shop, the shop at Nunney Catch Garage is regularly used by 77 respondents. A traditional shop, with the possible exception of a farm shop adjoining the A361 layby at Cheese Hill, is unlikely to be commercially viable but may be proposed at some time in the future.

### Parish Council Action

To support, through the planning process, any entrepreneur who wishes to establish a suitable enterprise.



## Community Facilities

The Village Hall is Trudoxhill's main community resource and there are many opportunities for the community to take advantage of it and put it to a variety of uses. A cinema (it already has the equipment) was the main preference whilst education, keep fit classes, dance, table tennis or other hobby clubs could also be well supported.

After school or school holiday activities or a children's nursery or crèche would be welcomed by many. Some people already give their time generously to help organise or run village activities, but more people/volunteers are always needed. 54 respondents stated their willingness to help organise or run a club or activity.

### Parish Council Action

Encourage those who put their names forward to help run Village Hall and other community activities and events to get these events underway.

### Communications

Getting important announcements, news of events etc into the public eye has not always been easy because of the number of different organisers such as Marston Music, Village Hall, the Parish Council etc. The preferred method of keeping in touch was through email although some people may not have access to electronic devices. 58 respondents would prefer a regular newsletter and that emphasised the importance of keeping 'Your View' going.

### Parish Council Action

Use best endeavours to ensure the continuation of Your View.

### Telephone Box

The Telephone Box is becoming hard to maintain as a depository of old books. However, 60 respondents want to keep it as a library while 19 suggested removing the Phone Box altogether. There were many other suggestions for its use including for the sale or exchange of homemade produce or plants and seed swaps, a local history resource, art gallery or a community information hub.

### Parish Council Action

Explore ways of putting the Telephone Box to good use.





## Environment

### Fly Tipping

Whilst the Trudoxhill environment was universally liked, respondents indicated their main dislikes. Surprisingly fly-tipping topped the chart by a long chalk with 65 respondents. To that can probably be added litter. Speeding and heavy vehicles, the distance to shops and lack of a local shop and the lack of a public recreational open space were main concerns. Crime, mostly in the form of theft from property and apparent lack of policing, and the lack of public transport was raised.

### Parish Council Action

1. Explore ways of addressing fly-tipping and litter issues in our lanes.
2. Maintain contact with Police Community Officers to address crime issues.

It is clear that most respondents are taking a proactive approach to improve the biodiversity of our environment in any way they can. The majority of respondents have tried to attract birds, bats and insects in their gardens or on their land by building nesting boxes and many have planted trees, hedgerows, bee friendly flowers and created nature corridors or built ponds. At least one farmer

has entered their farm for the Environmental Land Management scheme and one is undertaking organic farming. On the whole nearly all respondents are trying to improve the ecology on their farms, land or garden and any environmental improvement, small or large scale, should be encouraged and will lend support to county and national climate change initiatives.

When asked how we can improve our natural environment further, many respondents agreed that some village events would be helpful such as establishing a Conservation Group and having seed swap or garden events. Further comments received suggested that any Recreational Area which could be created could also be designed to encourage biodiversity. Protection and careful management of roadside verges for wildlife could be improved and one suggestion was to remove or turn off street lights to avoid light pollution.

### Parish Council Action

To be aware of local opinion on the environment and to act on it in their decisions where the opportunity arises.





## Main Action Points 2024 to 2034

---

1. To take heed of local opinion, as expressed in this Local Plan, in the planning application determination process.
2. To support suitable planning applications for small to medium work spaces in suitable locations.
3. To keep working with providers to pursue better internet access.
4. To oversee the implementation and observance of a 20 mph speed limit.
5. To explore the potential for new safe traffic free footpaths including to Nunney.
6. To continue endeavours to achieve a Village Recreational Area.
7. To support, through the planning process, any entrepreneur who wishes to establish a suitable shop or convenience store enterprise.
8. To encourage those who put their names forward to help run Village Hall and other community activities to follow through on their welcome offers of help.
9. To try to ensure the continuation of Your View.
10. To explore ways of putting the Telephone Box to good use.
11. To address fly-tipping and litter issues.
12. To maintain contact with Police Community Support Officers to address crime issues.
13. To be aware of local opinion on the environment and to act on it in their decisions where the opportunity arises.
14. To encourage or support where possible small or large scale local environmental initiatives.
15. To support planning applications for suitably sized wind turbines in suitable locations.

The full results of the Survey (the Community Review 2023) and the survey questions are available to view as separate documents in this section of the Parish website: <https://trudoxhill.org.uk/parish-plan-survey-results/>

Trudoxhill Parish Council comprises local people who give their time on a voluntary basis to ensure that our area is well managed and looked after, and improved where possible. Each councillor has their own area of responsibility. These include: Police Liaison; Neighbourhood Watch; hedges, verges and grass cutting; fly tipping and road obstructions; highways including speeding, potholes and road markings; village events; communications; Village Hall liaison; footpaths and bridleways.

To contact a Councillor please email [clerk@trudoxhill.org.uk](mailto:clerk@trudoxhill.org.uk)



## TRUDOXHILL 2

SOMERSET

Trudoxhill Parish

Trudoxhill Village

Gare Hill

Nunney Catch (part)

Ridgeway (part)

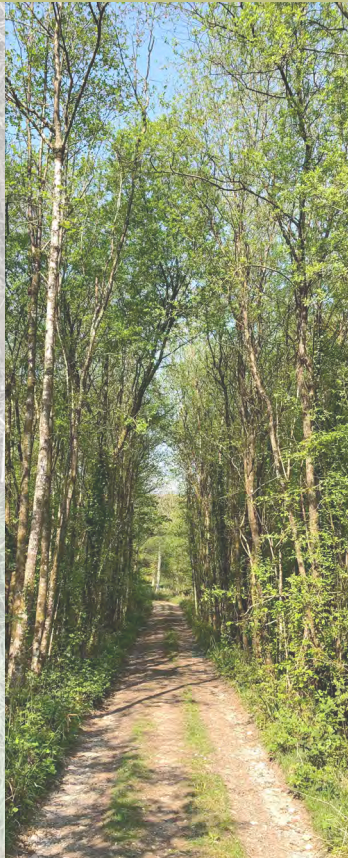
Cheese Hill

Marston

Tuckmarsh Lane

Bunns Lane

Smithwicks



TRUDOXHILL

### Contacting the Parish Council

To contact a local councillor please email [clerk@trudoxhill.org.uk](mailto:clerk@trudoxhill.org.uk) and your message will be passed on.

You are welcome to attend any Parish Council meeting. These are normally held on the first Thursday of each month at 7.30 p.m. in the Village Hall.

Please check [Trudoxhill.org.uk](http://Trudoxhill.org.uk) for changes, updates and minutes.