



YOUR VIEW

Welcome to the spring edition of Your View, Trudoxhill's parish magazine!

TRUDOXHILL PARISH WALK

Sunday 24th April. Starting at 10.00 am at the White Hart. 5.4 miles (8.6km). Finishing at about 1.00pm, in time for a pint!

The Spring Parish Walk will encircle the middle of the parish staying entirely within it for most of the route with only one brief foray into Selwood. Starting from the White Hart we will go via New Close Farm to Marston Church, through Marston Park to the Lighthouse. From there we will head south across fields and lanes through Monksham Farm to Iron Mills and over fields back to the White Hart. There will be lovely distant views, closer views of Marston Church and Marston House. A stroll past the Lighthouse lakes and a close encounter with Monksham Solar Farm. Dog owners, please note that we may encounter cattle. Intermittent light drizzle should not deter us but for cancellation information in the event of bad weather phone John on 07831 831 285.

DON'T FORGET TO VOTE

April 14th: Deadline to register to vote

April 19th: Close of postal vote applications

May 5th: Polling Day

For more information visit www.mendip.gov.uk/article/10641/Elections-2022

MARSTON MUSIC

Marston Church is hosting music events throughout the year, and we very much look forward to your support. On the second Sunday of April, May and June from 3pm to 6pm there will be an open mic event for musicians of all genres and abilities. Do come and listen or play.

Wednesday 11th May: Highly acclaimed Belshazzar's Feast's on their Farewell Tour. Traditional folk with classical, pop and music hall mixed in and supported by Guinea Lane Saxophones.

Friday 20th May: Somerset Tenor, Tim Pitman, will perform well-known Italian operatic arias and songs along with Cellist, Linda Stocks, and pianist, Jacquelyn Bevan.

Monday 30th May: The newly formed Dolce Singers will present an evening of music and words.

Sundays throughout July and August:

Enjoy afternoon teas from 2.30pm to 4.30pm with a background of live music. Sit in the sunshine, enjoy the view and let the music waft out to you or head inside to watch and listen. For details of all events and tickets please visit www.marstonmusic.co.uk.

GET IN TOUCH WITH YOUR VIEW

If you would like to contribute any content to Your View magazine, comment on any article or enquire about advertising, please email yourview8@gmail.com

Palette and Pasture

ICE CREAM PARLOUR



Come and visit the Ice Cream Parlour at Palette and Pasture. Choose from fourteen different flavours of delicious gelato by the scoop. Sundaes, Milkshakes, Waffles. Hot and Cold Drinks. Feed the goats & Sheep.



BOOK A CHILDRENS PARTY



SEASONAL TRAILS, MAIZE MAZE & PICK YOUR OWN

We host a range of exciting activities throughout the year.



Easter Trail
Fairy Tale Trail
Round Bale Trail
Christmas Trail

Maize Maze
PYO Sunflowers
PYO Sweetcorn
PYO Pumpkins



For more information please visit our website

www.paletteandpasture.co.uk



The Village Hall and community events

Having moved to Trudoxhill in 2020, I have been keen to see the Village Hall come back to life post lockdown. I joined a committee meeting to make some suggestions and unexpectedly left as the new Community Events Coordinator. Having run events and built communities all my life, I want to really emphasise that villages need to collaborate. When individuals are unsupported in organising events they soon burn out and stop enjoying it. I'm happy to take the lead but with my second baby due any day now, I am leaning heavily on this amazing community to pull together and so far people have been incredibly generous.

The first event we hosted was a pancake party. This

was a brilliant team effort from the committee and a special thanks has to go to our Clerk, Sam Winstanley, for his energy and ability to wrangle volunteers. About 80 people from around the parish attended and over 200 pancakes were served.



Antonia Grant proposed a bake sale to raise money for humanitarian aid in Ukraine, and was inundated with offers of baked goods. The sun shone on the Village Hall as we spilled out into

the car park to enjoy Sunday afternoon tea, and over £1,400 was raised.

So what's next for Trudoxhill? We would love to see the whole parish come together to celebrate the Queen's Jubilee on Sunday 5th June, with a big street lunch and traditional English fete style activities. With only two months to go it's all hands on deck to plan and execute a day to remember, but if any community can pull this off, Trudoxhill can!

If you'd like to get in touch you can find me, Vicky Hunter-Frigerio, via the Trudoxhill Community Group on Facebook, or you can email the trudoxhillvillagehall@gmail.com. The hall can be hired for private events such as birthday parties, supper clubs and even weddings! If you want to run an event for the local community then get in touch and we'll see how we can support you.

Vicky Hunter-Frigerio

Better bus charter for Somerset

We need to do something about improving our buses in Somerset. Our county currently has the second lowest level of bus journeys per resident of all the counties in England and Somerset's bus services have the very lowest level of passenger satisfaction in the country.

Residents of Somerset experience this every day, whether it's with difficulties getting to health services, reduced opportunities for those seeking work and further education or just the limited (if any) evening and Sunday bus services. As a result, we see ever increasing numbers of cars on our roads which causes higher levels of local air pollution and increase our carbon emissions.

Somerset residents have every right to expect better."

Somerset Bus Partnership was formed just a year ago to campaign for better bus services across our county and already we have a Somerset-wide network of 115 town and parish transport representatives who share our passion for better buses.

Somerset residents have every right to expect better, but it will need funding.

We have developed a Somerset Bus Charter and invite not just Councillors but community groups, churches and residents to join with us and endorse it. Get in touch somersetbuspartnership@gmail.com

The Somerset Bus Charter

Better buses for all our communities

We need a core network of frequent, high-quality services linking our towns and main villages with enhanced weekend and evening services. We also want an extension of the demand-responsive 'slinky' bus services, available to all and with longer operating hours.

An integrated transport network

We need bus routes to link with local railway stations with timetables that offer improved connections between buses and trains.

We also want to see the introduction of integrated ticketing across the county's different bus operators and with trains too.

Promotion of existing and new services

We should be promoting the bus as an important way by which we all can address the climate emergency in Somerset (transport accounts for nearly half of all carbon emissions in Somerset).

To enable more to go by bus, it is essential that current bus timetable information is shown at all main bus stops and bus times information is available in libraries and at other information points.

An affordable transport service for all

We should make bus travel more attractive through cheaper fares especially targeted at young people up to the age of 25. Plus, for everyone, a new, all-operator, countywide value ticket.

Cleaner buses

We want an accelerated transition from diesel buses to zero emission buses.

Meaningful funding of bus services

We need Somerset's bus budget to be brought progressively up to the average for similar rural authorities in the South West.

The MOBILITY SHOWROOM

BUY TODAY WITH snap!

ELECTRIC ADJUSTABLE BEDS

RISE & RECLINE CHAIRS

MOBILITY SCOOTERS

STAIRLIFTS & BATH LIFTS

DAILY LIVING AIDS



FLEXIBLE FINANCE AVAILABLE

- Large, fully stocked showroom
- Friendly local business
- Easy parking • Free home visits



SHOWROOMS AT:

The Barn, Pyle Farm, Trudoxhill, nr Frome BA11 5DL 01373 836165

17 George St, Warminster, BA12 8QA • 01985 843035

Western Way, Melksham, Wiltshire, SN12 8BY • 01225 251601

Haskins Retail Centre, High St, Shepton Mallet BA4 5AX • 01749 343131

www.lifeandmobility.co.uk

Marston Park Estate Floodplain Restoration Project

A floodplain restoration project is being developed with the Bonham Christie family on part of Marston Park Estate. The project forms part of the Mendip Flood Risk Management Programme, funded by Somerset Rivers Authority. The project is being progressed by Mendip District Council, taking forward work undertaken by FWAG SW as part of the Somerset Frome Natural Flood Management project.

Minor works will be undertaken to restore the historic marsh and floodplain on land between Tuckmarsh Lane and Thickthorn Wood.

Downstream flood risk will be reduced by holding back, and slowing the flow of water. The project will also increase biodiversity and improve water quality. The works are being designed to avoid damaging archaeological features. Water level, water quality and ecology surveys are being undertaken. Additional details of the scheme will be made available once further survey and design work has been completed.

For further information please visit www.mendip-flood-risk-management-programme-mendip.hub.arcgis.com

What's happening at your local pub?

The White Hart Inn, Trudoxhill

With spring arriving and the pub's garden already being used by lots of people, we are looking forward to calm and warm summer evenings. Live music in the garden is planned for a few lazy Sunday afternoons through the summer, so bring on the sunshine. Fun and pub games, some easy quiz questions and some proper head scratchers, random conversations and banter at the bar, and quiet evenings with a glass of wine are all in store for this year at The White Hart. I'm sure a lot of you have already seen the blackboard in the car park reminding you of the upcoming quiz nights, these will be hosted every other Thursday 7.30pm till about 9.30pm, please get in touch to book a table. Head Chef Tommy B is looking after all the food needs and has been wowing diners with his Sunday Roasts and new dishes on the menu.

If you are a keen gardener and have started to plant your veggies for the year, I would love to buy any excess locally grown fruits and veggies. As you know we love to cook with the best and if the best is grown in Trudoxhill and there is a little extra we would love to celebrate locally grown and get it on the menu. We are looking forward to seeing you all soon.



Mobile 07976 735086
Frome 01373 813 721
Bath 01225 663 086
www.kapowpest.com



With over twenty years experience in the industry, Chris can offer the full range of pest control services.
Rats, mice, moles, squirrels, birds, insects and more...

"Chris has fantastic knowledge and expertise"

Local, Independent and Professional

The Trudoxhill Lending Library

Also known as the telephone box. Our telephone box is in need of some volunteers or volunteer to paint it this spring or summer. If you would be willing to take on this project or to assist please let YourView know by emailing us at yourview8@gmail.com.

There have been a few comments to us that some people are misusing the library by dumping large numbers of unwanted books in the box. This makes the project unmanageable. The idea is that you take one book out and replace it with one of your books. This enables the telephone box to be kept tidy and encourages use, whereas if we clutter it up, no one will want to use it.



Lending with Heart and Mind

Mendip District Council fund a not-for-profit loan scheme for homeowners and landlords*.

We understand the expense of maintaining your home and we work with you to take the stress out of funding repairs, improvements or adaptations.

We see you as an individual, not a credit score. Our knowledgeable team of advisers will guide you through the process of applying for a home improvement loan.

For a no-obligation assessment or more information visit www.lendology.org.uk or call 01823 461099

Heatherton Park Studios, Bradford on Tone, Taunton, TA4 1EU

*subject to eligibility



Signs of spring

Last week I found the first little white star like flowers of the Blackthorn (*Prunus spinosa*) bursting forth from its black, angled bare branches. These branches have long sharp strong but brittle spines. If you are unfortunate enough to have one pierce your skin it will quickly turn septic, and needs attention.

Blackthorn is used as a hedging plant and will throw up suckers making a dense thicket and great shelter for small birds, mice and rabbits. Left unchecked it will quickly over run grassland. The fruits of the Blackthorn are sloes, little blue plum like fruits covered

with bloom, like the grape, picked and tasted from the bush, sharp enough to make you screw up your face and leave a dry tongue! A frost will increase their sugar content, if picked and pricked then and added to gin with sugar and stored for a few months, they make a delicious warming winter drink. The arrival of the first blossom on the Blackthorn is said to hail Blackthorn Winter, the coldest part of the year.

There have been other almond like flowers blooming earlier in the hedgerows but these are cousins of the Blackthorn, all part of the *Prunus* family. Lesser Celandines (*Ficaria verna*) the first harbingers of Spring, still shine their yellow heads with oh! such shiny petals, like tiny torches on the banks. The butterfly like leaves of the Honeysuckle (*Lonicera periclymenum*) are now twisting and turning clockwise around bare stems. Promising to scent the woodlands with a perfume like no other.

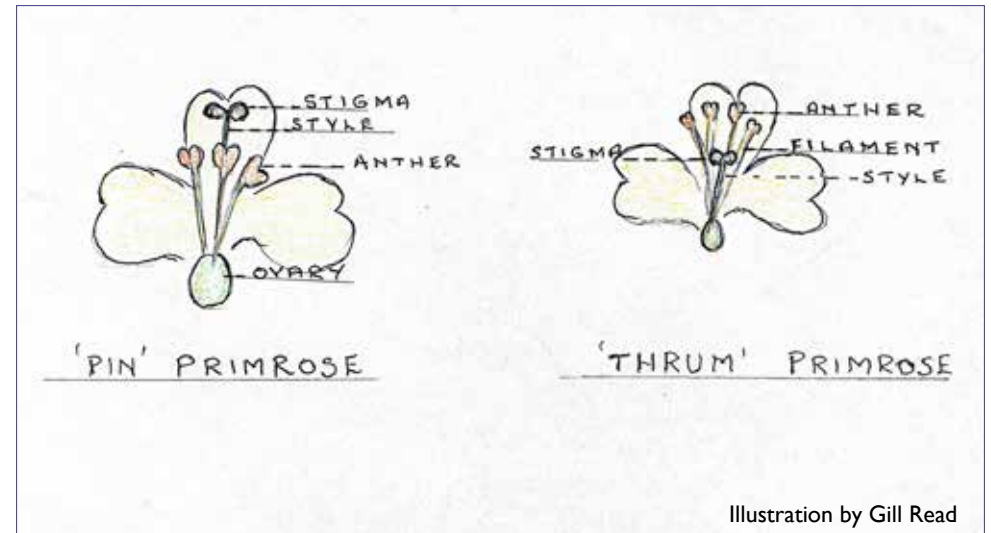


Illustration by Gill Read

In damp hollows and stream sides there is a golden carpet made by the flowers of the Golden-saxifrage (*Chrysosplenium oppositifolium*).

Clumps of the dark green linear leaves of Bluebells (*Hyacinthoides non-scripta*) are to be seen on the woodland floor. Not to be confused with the Spanish Bluebell (*Hyacinthoides hispanica*), this is a garden escape and hybridises with our native bluebell. Its flowers are more erect, each flower being larger and flatter and often a pale blue, white or pink/purple. It has no scent. You may spot Pignut (*Conopodium majus*) its feathery leaves beginning to show, arising from a rounded small brown tuber, much loved by badgers and pigs. They are edible to humans too and a childhood joy was to dig them up with a stick that usually snapped or your fingers when the nails usually snapped too, leaving dirty nails filled with the leaf mouldy earth. All worth it for the secret picnic party of the root tubers. My favourite wild flower the Primrose (*Primula vulgaris*) has been boldly blossoming in sheltered sunny spots and is now painting the banks and woodlands a delicate shade of yellow. The subtle fragrance

brings back memories of childhood days when we gathered bunches and in hot little hands took them to Sunday School to decorate the Church at Easter. At first glance the primrose flowers look identical, but look more closely and you will see that the position of the stigma differs. In the *pin* Primrose the stigma is at the top and looks like a small yellow green pinhead, with the anthers around the style halfway down the tube. Where as in the *thrum* Primrose the style reaches only half way up the tube and the anthers are at the top. This arrangement allows for butterflies and bees to easily cross pollinate.

The term *thrum* is a weaving term, meaning the web ends left in the loom after the cloth has been removed. The dictionary definition is "to make a continuous low sound". I like to think of this, as the humming of bees as they work around the primroses. And the "Town Hall Clock" (*Adoxa moschatellina*) a delicate small pale green perennial found in woodland and hedge banks is telling us by its four faces, like the town hall clock, that once more it is almost time for Spring.

Gill Read

The White Hart

Trudoxhill

We are looking forward to this year ahead
Putting covid behind us and driving forward
We are open every evening from 5.30pm
Open all day over the weekends

The pub is available for private hire during the lunch times of
Tuesday through Thursday 12pm – 3pm

We are proud to welcome Tommy Berryman who has joined the team to drive the kitchen. Tommy is a local from Trudoxhill and has been building his talent as a chef for over 20 years. He has exciting ideas and secret recipes and dishes he is looking forward to everyone trying

A pub classic game will be returning in conjunction with Cayford's Butchers in Frome. Once a month we will be having a Butchers Tray raffle, with a £1 per ticket cost and a maximum of 85 tickets per game our first draw will be on 24th April. So pop in a buy a ticket while enjoying a drink or a meal

White Hart Quiz Night has started again with Quiz Master Sam from Quizzical. The Quiz is running every other week on a Thursday night starting at 7.30pm Booking a table is highly recommended

Sunday roast is still a firm favourite with locals and all who find us
do come along a find out for yourself

Book a table on
01373 836324

Spring spotter activity



Carpets of dancing bluebells



Yummy Easter eggs



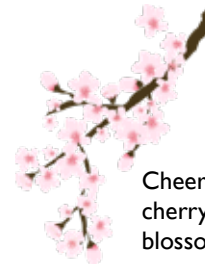
Buzzing bees



Jubilant rhododendron



Scurrying squirrels



Cheerful cherry blossom



Bold and beautiful tulips



Lime green leaves



Magnificent magnolia

Leaping lambs



JW RANSOME & SONS

01373 461134

www.jwransome.co.uk



SKIP HIRE

HOUSEHOLD & COMMERCIAL SKIPS



METAL RECYCLING

TOP PRICES PAID - COLLECTION AVAILABLE



GRAB LORRY HIRE

ALL TYPES OF WASTE REMOVED



LICENCED ATF

VEHICLES CAN BE BROUGHT IN OR COLLECTED

Shop online and use discount code: **FREELOCAL** at checkout for free delivery within Trudoxhill and surrounding areas

WWW.WILTS-SMOKEHOUSE.CO.UK

MILLARDS HILL STABLES, TRUDOXHILL

FROME, SOMERSET, BA11 5DS

INFO@WILTS-SMOKEHOUSE.CO.UK

+44 (0) 1373 836202





- Commercial & Residential
- Windows Inside and Out
- Conservatories
- Gutter Cleaning
- Soffits
- Solar Panels
- Cladding and Signs

Contact us for a free non-obligation quote

07739 189180

sunlightwindow8@gmail.com

www.sunlightcleaning.co.uk



huttonbrown
 painting & decorating
 established family company

OUR SERVICES:

Period and heritage
 Spray / brush finish
 Dustless sanding
 UPVC windows
 Wallpaper hanging

WHY CHOOSE USE:

50 years of experience
 Highest standard care
 A* communication
 Unrivalled quality

Call John: 07711657170 & 07957308855 or
 text images for instant quote and availability.



HOME & PERSONAL STORAGE



BUSINESS STORAGE



PACKING MATERIALS SHOP



**OPEN
 7 DAYS
 A WEEK**

● Clean, dry, secure storage accessible
 seven days per week in individual
 lockable rooms - everything from a
 small locker to the size of a garage.



Clear Space Self Storage, 1 Mendip Avenue, Shepton Mallet, Somerset BA4 4PE

Tel: 01749 715000

www.clearspaceselfstorage.com info@clearspaceselfstorage.com



BELLEVUE VETERINARY CLINIC

MODERN FACILITIES | TRADITIONAL VALUES

Dedicated equine, small animal & exotics team

Based in Trudoxhill, Frome covering Somerset, Wiltshire & Dorset



www.bellevue-vets.co.uk

01373 836186 | info@bellevue-vets.co.uk

